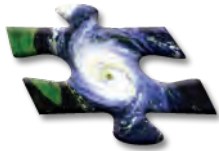




Benefits of CRWU

- Increases the awareness and understanding of potential climate change impacts on infrastructure and water resources
- Helps utilities assess vulnerabilities to climate change and develop adaptation plans that reduce risk
- Supports the building of stakeholder relationships to enhance the water sector's climate change resilience
- Provides information the water sector needs to ensure its ability to provide reliable, clean, and safe water services now and into the future



For more information, contact:

CRWUhelp@epa.gov

or visit:

<http://water.epa.gov/infrastructure/watersecurity/climate>



Office of Water (4608-T)
<http://water.epa.gov/>

EPA 817-F-11-002
February 2011



Climate Ready Water Utilities



Climate change will impact the water sector and is important to consider in all aspects of drinking water and wastewater utility operations and planning. For water utilities, achieving "climate readiness" requires a comprehensive and adaptive approach that incorporates evolving climate science and local conditions, involves adaptation and mitigation strategies, and engages a broad range of water sector stakeholders.

The U.S. Environmental Protection Agency (EPA) has developed its Climate Ready Water Utilities (CRWU) initiative to assist water and wastewater utilities in becoming "climate ready." Through the development of tools and other resources, CRWU supports the implementation of plans and adaptation strategies at water and wastewater utilities that account for potential climate change impacts and build water sector resilience.

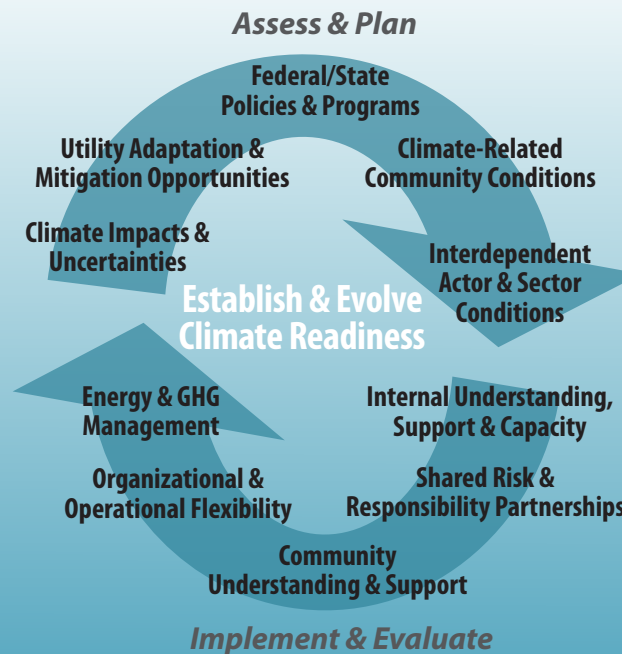
Is Your Utility Climate Ready?

The National Drinking Water Advisory Council (NDWAC) established the Climate Ready Water Utilities Working Group to evaluate the concept of "climate ready water utilities." The Working Group provided 11 findings and 12 recommendations to EPA to help develop and support a program that enables utilities to attain a state of climate readiness.

Steps a utility can take to establish and evolve climate readiness are reflected in the CRWU Adaptive Response Framework (shown in the image to the right). This Framework encourages utilities to continuously engage in climate change response activities.

The Working Group's recommendations focus on the (1) implementation of a CRWU program; (2) coordination across government and the water sector; and (3) development of tools and training that incorporate climate into assessments and planning. The final NDWAC CRWU Working Group report can be found at <http://water.epa.gov/infrastructure/watersecurity/climate>.

Climate Ready Adaptive Response Framework



Climate Resilience Evaluation and Awareness Tool (CREAT)

CREAT is an interactive tool designed for water and wastewater utilities to assess the risk of potential climate change impacts on their assets, operations, and missions and to develop adaptation plans. Available for download on EPA's website, CREAT guides users through a flexible, systematic assessment process, featuring:



- Libraries of utility assets that may be impacted by climate and adaptive measures that can be used to reduce potential consequences
- A climate change-related threat list developed from climate change projections with links to relevant adaptive measures
- The ability to update when new climate data becomes available over time so utilities can use current and historical data as part of their adaptive planning
- A series of 10 reports that can be generated to help users communicate assessment results and better inform decision making and planning

<http://water.epa.gov/infrastructure/watersecurity/climate/creat.cfm>



Tabletop Exercise Tool for Water Systems: Emergency Preparedness, Response, & Climate Resiliency (TTX Tool)

The TTX Tool assists users in planning, customizing, and conducting water sector-specific tabletop exercises on five climate change scenarios. Background technical information included in the tool provides a brief introduction to climate science and how climate impacts may affect utility operations. The discussion questions included with each scenario encourage utilities to incorporate climate change into their long-term plans. The TTX Tool is available for download on the CRWU website.



<http://water.epa.gov/infrastructure/watersecurity/climate>



CRWU Toolbox

The CRWU Toolbox is a searchable Web-based database that contains climate-related resources that assist utilities at all stages of the planning and decision making process, from raising general awareness to implementing mitigation and adaptation measures. The Toolbox includes five categories of freely available resources:

- Reports, articles, and other publications on climate change and water resources
- Grant programs that could provide funding for climate-related actions
- Climate-related activities in government, academia, and the water sector
- Upcoming seminars, workshops, and training sessions
- Models and tools for assessing climate change impacts and considering these changes as part of water resource management



<http://www.epa.gov/safewater/watersecurity/climate/toolbox.html>